

THE LONG VIEW

See Your Impact



SHENANDOAH
NATIONAL PARK TRUST

2024 Impact Report



BOARD CHAIR

Patti McGill Peterson

VICE CHAIR

Alison DeTuncq

TREASURER

Brett Greenfield

SECRETARY

Walter Heeb III

BOARD OF TRUSTEES

- Teal Baker
- Cathy Dalrymple
- Rod Graves
- Norm Laudermilch
- Jenny Leech
- Ray Mishler
- Sean Nelson
- Rick Richmond
- Nan Roberts
- John Tschirky
- Douglas Ward
- Cheri Woodard

EMERITI

- David Aldrich
- Frederick Andreae
- Don Baur*
- Maggie Bullard
- Phebe Cambata
- Dorothy Canter
- David Dallas, Jr.
- Janet Eden
- Wendy Fewster
- Maureen Finnerty
- Hullihen Moore
- Stephen Nauss
- Patrice Neese
- Katrina Powell
- John Reynolds
- Peter Rice
- William Schrader
- V.R. Shackelford*
- Susan Whitson
- Greg Yates

*Deceased

Dear friends,
 As we reflect on the past year, we wish to express our profound gratitude for your unwavering support of Shenandoah National Park. Each year, we share stories of growth and change in this Impact Report, and this year is no exception—though the nature of that growth has taken on new significance.

In 2024, our ongoing support for the park found a focus in several research-driven projects, such as the forest health initiative and the watershed liming study. We expanded experiential learning opportunities for a broader, more diverse group of young people and launched long-term programs that connect local communities through land conservation, the arts, and increased access to the park’s resources. Moreover, thanks to your generosity, we hosted numerous successful events, including the sold-out Banff Film Festival and our largest Shenandoah Soirée to date.

Your continued support is also propelling us toward our ambitious goal of annually donating \$1 million to Shenandoah in 2025. This year, we proudly awarded the park \$658,696 in grants while also expanding our mission-aligned funds.

Together, we have accomplished so much. Shenandoah National Park remains a symbol of unity, shared history, and ecological integrity. In the midst of challenges posed by insufficient federal funding, your contributions have been pivotal in preserving ecosystems, enhancing trails, and establishing vital community partnerships.

As you peruse the stories and statistics in this report, we hope you take pride in the tangible impact your generosity has made. Your dedication ensures Shenandoah remains a place of reflection, stewardship, and connection for generations to come.

On behalf of the entire Shenandoah National Park Trust, thank you for making a difference—not only for our park, but for everyone who finds respite and inspiration in its natural beauty.

With heartfelt appreciation,

Jessica Cocciolone
 Executive Director
 Shenandoah National Park Trust

Patti McGill Peterson
 Board Chair
 Shenandoah National Park Trust



IMAGE THIS SPREAD | NPS

COVER IMAGE: “Sunrise from Tunnel Overlook” | NPS



This summer, 8 Charlottesville teens

got professional experience on
a conservation crew.

Trust-supported crews
contributed
960 hours
to overlook maintenance
in Shenandoah.

Museum interns catalogued
**1,132 historical
artifacts**
and assisted with management of
two historical buildings in SNP.

Identified and removed
invasive species from
**76 acres in
the park.**

This year,
**491 programs
were conducted**
by the education and interpretation
department, consisting of formal
education programs, summer and
after-school youth engagement
programs, and service-learning
programs.

Wild Shenandoah

Restoring Headwater Habitat

Across Shenandoah National Park, laminated red signs prohibiting fishing are becoming a familiar sight. Stapled to lichen-covered trees at trailheads, these signs read “Park Streams Temporarily Closed to Fishing” and explain that, with such low water levels, the park Superintendent has decided to close the streams to protect trout and other fish populations from added stress in a diminished habitat.

Patterns of summer and fall droughts are becoming increasingly common, and these red signs represent just one of the many steps the park is taking to protect native aquatic creatures.

Through a grant from the Trust last year, park scientists tested every stream within Shenandoah’s boundaries for Brook trout eDNA to discover where the native fish were thriving or struggling.

They found that high-elevation streams that have recovered from acid rain

deposition are seeing stable or increasing trout populations. However, in acid-impacted streams at the same elevations that had NOT regained a balanced pH, trout populations are only moderately abundant, falling short of their potential to support these native fish.

Meadow Run is one such high-elevation stream and cold-water habitat that has not been able to fully recover from acid rain. To maximize the stream’s habitat potential, the park prioritized restoring the water’s pH through a liming process.

Evan Childress, Shenandoah’s Chief of Natural and Cultural Resources, hopes that this project will speed up recovery and demonstrate the efficiency of liming in watershed restoration.

“This could be a really good habitat if we’re able to bring the pH back under control,” he said. “There’s some very slow recovery happening, which is encouraging, but by

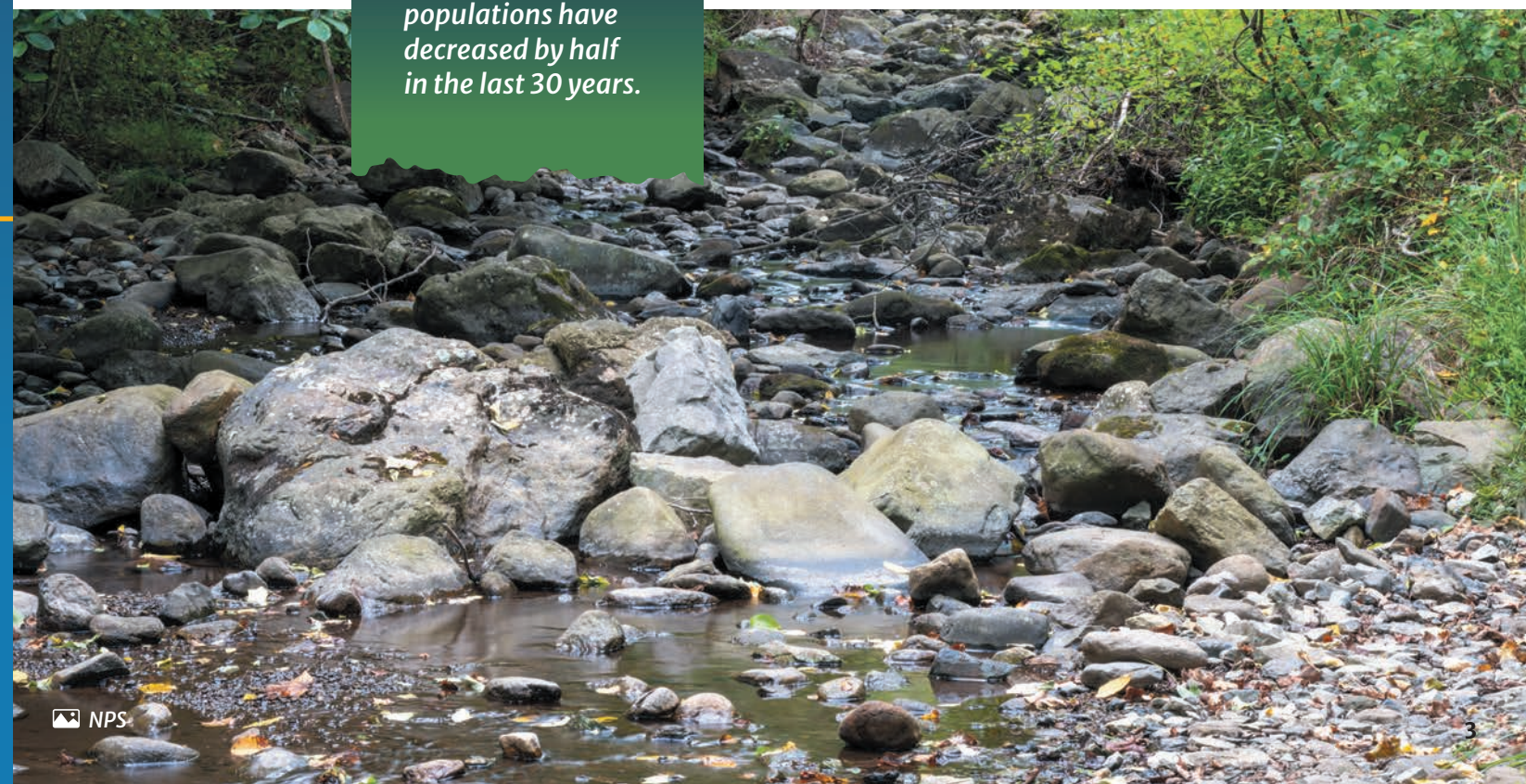
In more than 70% of Shenandoah’s streams, brook trout populations have decreased by half in the last 30 years.



doing this restoration project, we’re hoping that we can really speed that up and bring the population back to what we would expect for a stream of this good flow, stability, and pretty cold water.”

Trust funding is providing data-based insight into the state of Meadow Run before and after liming, documenting a proof of concept for this treatment in successful watershed restoration.

In upcoming years, the park plans to focus protection efforts around streams with healthy fish populations and implement artificial intelligence monitoring to collect consistent data on streamflow across the park, maximizing biologists’ capacity to continue restoration work where it will have the highest impact.



Blazing a Trail

Conservation work is a booming industry across the country. From education and historic preservation to trail maintenance and wildland firefighting, the workforce needs competent professionals with the skills, experience, and confidence to do the job well.

But the field is becoming more professional and technical by the year, requiring 1) specialized skills, 2) proficiency with unique tools, and 3) significant teamwork (especially in wilderness areas). Many of our region's youth simply don't have access to the exposure and training that would safely introduce them to the conservation field.

This year, eight Charlottesville teens got experience with all three.

In collaboration with the Rivanna Trail Foundation, Appalachian Conservation Corps, Charlottesville Area Mountain Bike Club, and the City of Charlottesville's Community Attention Youth Internship Program, the Trust piloted *Trailblazers: Charlottesville to Shenandoah*. The program was designed to reverse the growing disconnect between America's youth and the natural world, introduce new audiences to the outdoors, and train a skilled workforce committed to preserving local natural spaces.

The crew of eight high schoolers worked on more than seven miles of Charlottesville's Rivanna Trail and Shenandoah National Park's Lewis Run Falls Trail, building stairs and waterbars, clearing vegetation, installing wayfinding signage, and learning from professionals in the field.

"I definitely want to find a way to work in conservation in the future after this experience," said Trailblazer crew member Wes Swanson. "It's really cool learning how the trails are designed and how to make the water flow off it in the right way, and it's fun using all the machinery. I would love to have a career related to this."

The majority of the crew mentioned a similar desire to pursue conservation work, whether as summer work during school years or as a career path. Thanks to their summer as Trailblazers, they are well-equipped to pursue those jobs in the coming years.

"I had this vision of working in the environmental field in my summers during college, but I was honestly a little afraid of actually doing it," said crew member Nava Khurgel. "Now I feel like I have a foot in the door. Like, look: I did it and now I can keep working in conservation at least every summer for now. And then I'll see where I am after four years of college!"

The Trust is proud to work with our park and community partners to create these opportunities for the future stewards of public lands and hopes to replicate this program in other communities around Shenandoah, blazing a permanent trail towards conservation careers.

Thanks to their summer as Trailblazers, these teens are well-equipped to pursue those jobs in the coming years.



"I honestly just like the whole program. I've been hiking around on these trails in Charlottesville that we are working on, so I'm familiar with them. I like seeing the people hike past us while we are working and say, 'thank you for working on these trails for us.' These are the trails in my home; it's really nice to work on the trails where you live."

- Christian Martinez



"I've always been around the Rivanna River and live right near the trail, so it's awesome to be making this area even better. I am learning more skills because I have a great team and solid foundation so I can really use what I have learned in this program to better my community. I've always been interested in and loved being outdoors, so I was definitely thinking about going into forestry as a career or something with outdoor nonprofits in the future."

- Matthias Zimmerman



Trailblazers Partners & Supporters

- Rivanna Trail Foundation
- Appalachian Conservation Corps
- City of Charlottesville (CAYIP)
- Charlottesville Area Mountain Bike Club
- Virginia Outdoors Foundation
- Public Lands

"I hope that [crew members] see just how much of a career you can build with working outside, because I feel like that's like the main appeal of trail work—you get to camp outside, eat outside, sleep outside. You've got to show someone the 'why' of the program. So hopefully this project introduces them to some personal and professional growth."

- John Rice (crew leader)



The View from Up Here

Postcards dating back to the early 1900s display the splendor of the Blue Ridge Mountains. To this day, Shenandoah National Park's 75 scenic vistas remain the primary draw for visitors from near and far, contributing heavily to the park's high accessibility rankings every year.

While these views have continued to amaze motorists for more than a century, without consistent attention and maintenance from professional crews, they can disappear in less than a decade. The rapid rate of new and invasive growth, coupled with budget constraints, the need for a skilled workforce, and the \$1 million price tag per maintenance cycle, makes upkeeping all 75 overlooks – a total of 286.37 acres – more difficult by the year.

Through the Trust's Adopt an Overlook program, park neighbors have come alongside Shenandoah to preserve these vistas. Greene, Rockingham, and Augusta Counties have all made contributions to cover the cost of maintaining overlooks in their region, and one individual adopted McCormick Gap Overlook, as it offers a view of his home in the Shenandoah Valley.

This program brings crews of young adults to the park to gain professional skills and certifications while making an immediate and immense impact for all who visit Shenandoah. It's expensive, difficult work, with severe slopes and unforgiving landscapes, and these specialized crews must arrive in the park prepared with the proper technical training and tools.

Each year, these crews contribute approximately 960 work hours, aiming to clear all the vistas funded by the Adopt an Overlook program, as well as overlooks the park has prioritized for that year. This gives the park much-needed capacity to meet their standard of clearing each overlook within an eight-year cycle.

This year's saw crews are currently in the park, taking care of viewscapes to ensure visitors continue to experience the visual wonder of Skyline Drive and Shenandoah National Park.

Adopt an Overlook

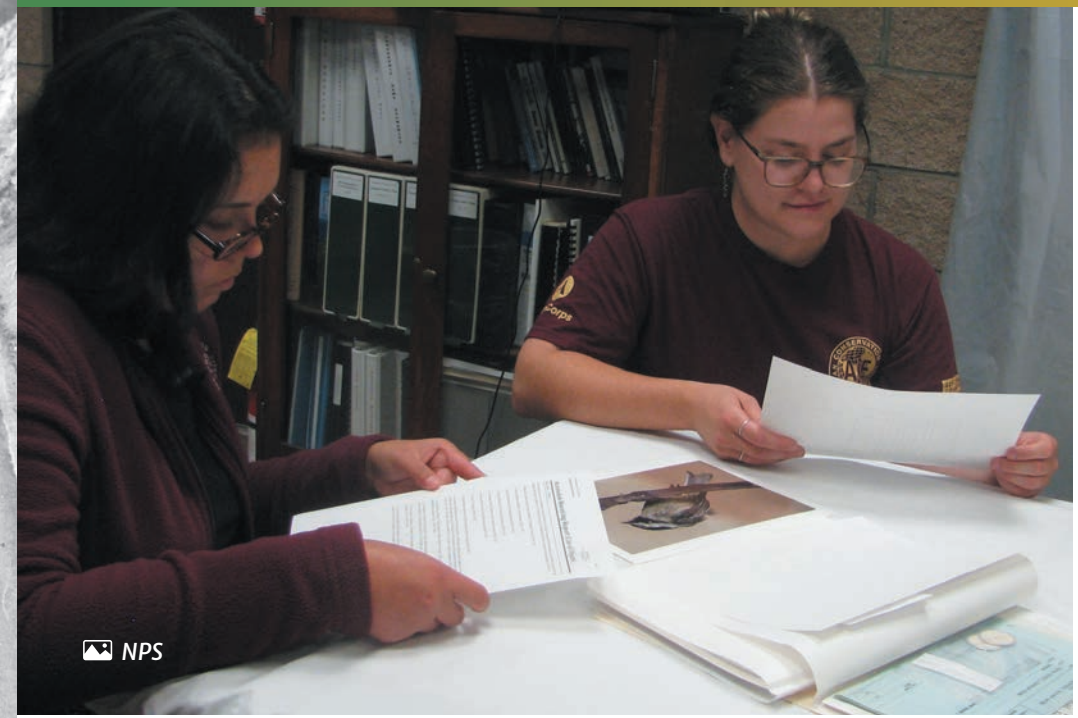
The goal of the Adopt an Overlook program is to have every overlook in the park maintained annually, lightening the workload required each year. Want to be part of preserving Shenandoah's viewscapes? Contact Ethan Serr at eserr@snptrust.org for more information.



Motorists park along Tunnel Overlook in 1935. NPS



Last fall, the Women's+ Saw Crew cleared the views at Sawmill Run, Sawmill Ridge, Beahm's Gap, Rattlesnake Point, and Dundo. ACC



NPS



The Past for the Future

“One million objects, four locations, one person on staff,” Kandace Muller said of her work as Shenandoah National Park’s Museum Specialist. “If you think about the Smithsonian, it was created to just be a museum, but here, in a national park, the museum is a component of the larger whole. We have the same professional responsibilities as any museum, and we support every other division with information.”

The park’s museum collection informs behind-the-scenes decisions, providing images, maps, textual information, historic architectural fabrics, and more. This information supports everything from legal resolutions to interpretive programming to the roofing material that maintenance crews use to preserve the historical character of Dickey Ridge Visitor Center.

Muller also handles inquiries from locals, researchers, and descendants of mountain families who are looking for homesites, family cemeteries, or other

personal history. In addition, she manages objects in the park’s museum exhibit at Big Meadows as well as the two historic house museums, Rapidan Camp and Massanutten Lodge, traveling to all three sites every Thursday during visitation season (and once a month during the off season) to gather environmental data.

“To manage preservation, access/use, and documentation... you just can’t do it with one person,” Muller said. For the last seven years, the Trust has funded a seasonal internship to assist her with preserving Shenandoah’s history. Those interns have worked with all aspects of museum management, including taking more than a thousand specimen photos and digitizing thousands of documents, making them accessible to the public and their fellow National Park Service employees.

“The interns the Trust has funded over the years have made a tremendous

difference,” she shared. “I couldn’t do it without them.” This year’s interns, Hannah Boaz and Madison Wytenbach, arrived in Shenandoah in September and have already gotten hands-on experience with artifact handling, process documentation, and more.

“I think Shenandoah has a unique history,” said Boaz. “We’ve been learning from Kandace how to appropriately handle these materials so they can be enjoyed far into the future. And I think that’s the main mission of what we do – it’s very forward thinking and future-focused.”

Muller agreed, saying, “The Park Service mission is endless.

When we’re thinking about what to acquire and preserve, we’re always thinking forward, trying to guess at 100 or 500 years into the future, because there is no end to Shenandoah.”

“The interns the Trust has funded over the years have made a tremendous difference,” she shared. “I couldn’t do it without them.”

Kevin H. Adams Memorial Endowment



The word “legacy” can be complicated, layered with meaning and often inflated with subjective sensation or persuasive pathos. Sometimes, however, the term is too small to capture the true, lasting impact a person makes on the world around them.

When describing what Kevin H. Adams left behind when he unexpectedly passed away in 2023, “legacy” will only begin to capture the broad and intricate strokes he painted through the art world, the local community, and the lives of countless individuals.

Thanks to many mentors and supporters, Kevin was able to spend much of his life creating art. While his professional experiences ranged from documenting military exercises to designing opera sets, his first love was always nature and landscape paintings.

In 2017, Kevin spent three weeks living fully immersed in the “color-rhythms” of Shenandoah as an Artist-in-Residence, just 11 miles from his home in Rappahannock County. He invited visitors to paint with him, describing the time as “a richer experience than [he] could have hoped.” He later said, **“I hope that the work that I produce will help others recognize the value of preserving our National Parks for future generations.”**

Kevin’s husband, Jay Ward Brown, has established the Kevin H. Adams Memorial Endowment to honor this hope and to continue Kevin’s legacy of passing on to other artists the same mentorship and support that he was given. This endowment in his memory will support Trust programs that “encourage, educate or otherwise promote artists interested in Shenandoah National Park and its surroundings as the subject of their artwork.” The Fund will have an emphasis on the visual arts, though it will include all types of artistic practice, and will continue to nurture the artists of tomorrow.

“I hope it will have a meaningful impact for generations of artists in this area who are interested in portraying our American landscape, and in particular the landscapes of Virginia and this park, which was so important to Kevin and his artistic vision,” Jay said of his gift. “I want future beneficiaries of the funding to be able to learn who Kevin was and take a little inspiration from his words and from his paintings... and hopefully also draw from that the importance of ‘paying it forward,’ as Kevin always put it, so that as they become established, they remember to mentor the people who follow them.”

This ongoing generosity and support – one artist sharing his gifts with those around him and inspiring others to share their gifts in kind – is the remarkable legacy of Kevin H. Adams.



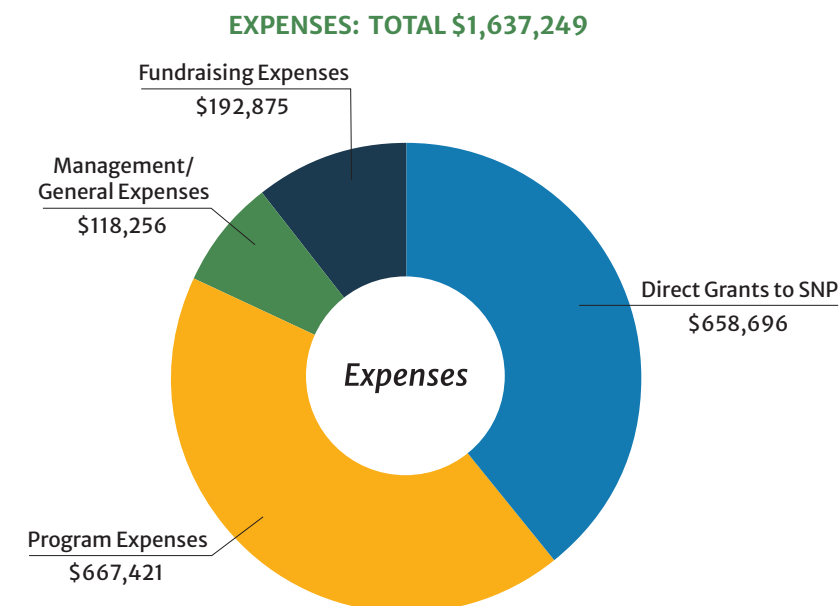
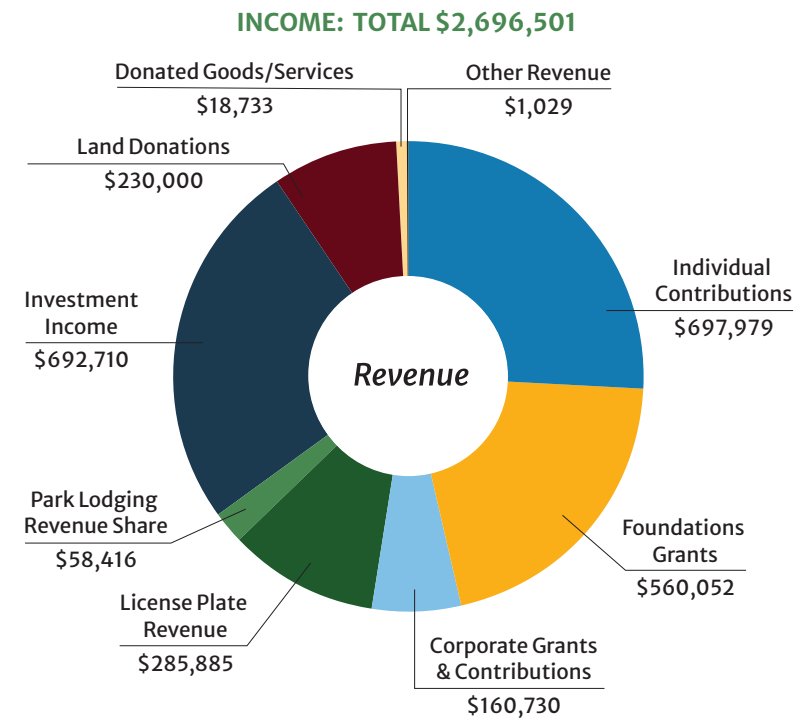
Shenandoah Legacy Society

The future of Shenandoah National Park will be built on today’s planned and deferred gifts. Together with our loyal donors, we will be able to ensure that one of our national treasures is protected and preserved for many generations to come.

Call the Trust at (434) 293-2728 or email jcoccione@snptrust.org to discuss your planned gift.



FY24 Financials



NET ASSETS

Land for Transfer to the Park	\$734,569
Temporarily Restricted Net Assets (Project Funds)	\$1,296,194
Permanently Restricted Net Assets (Endowments)	\$159,900
Unrestricted Net Assets	\$4,224,868
TOTAL NET ASSETS	\$6,415,531

*Numbers shown here have not been audited. For a more detailed financial report, please contact our office at (434) 293-2728 or info@snptrust.org.

As the numbers reveal, your support matters. Contributions from individual donors alone can completely cover the cost of our direct grants to Shenandoah, giving us a solid foundation for growth as we expand our community partnerships and build towards a signature project in the park.

\$658,696 donated to the park in grants

2,405 threatened hemlock & ash trees treated

370 visitors attended free public art programming

53 miles of trails cleared

80 bear boxes provided

10,449 youths served in education programming

2,334 volunteer hours facilitated

6 interns supported

Thank you for making a difference

Gifts included in this list were received between October 1, 2023 and September 30, 2024. If your name has been omitted in error from any of these lists, please accept our apologies and let us know by calling (434) 293-2728.

* Indicates a realized planned gift or estate gift 🌲 Indicates a gift of land

Shenandoah Legacy Society

Shenandoah Legacy Society members are including Shenandoah National Park Trust in their wills and/or estate plans.

Anonymous
Teal Baker
Jay Ward Brown
Fran and Tom Butterfoss
Phebe Cambata
Dorothy Canter
Mr. Stephen E. Craig
Dave Dogan and Bob Farrell
Janet Eden
Doris J. Garvey*
Janice Hazlehurst and Stephen Charles
Susanne and Phillip Hubrig
Scott Kelly
Wilma La Mee*
Richard Lackey
Roger Lilly
Mr. Edward Macauley*
The Estate of Herbert C Madison*
Patti McGill Peterson and Kate Woodward
Jackie and Don Pamentier
Jim and Gail Schlett
Carolyn Segrist
Louise Steele
Karen Koltes and John Tschirky

White Oak Circle (\$100,000+)

The DN Batten Foundation
Keith Cain 🌲
National Park Foundation

Hawksbill Circle (\$50,000 - \$99,999)

Jay Ward Brown
Merck Foundation

Stony Man Circle (\$25,000 - \$49,999)

The Elisabeth Reed Carter Charitable Lead Trust
The Charles Fund
Joseph Daniel
Nancy and Dick Raines

Blackrock Circle (\$10,000 - \$24,999)

Anonymous
Bass Pro Shop / Cabela's
Karen and Tom Bond
Dr. Scholl Foundation
Luray Caverns
Chuck MacDonald
Hamilton MacGregor
Patti McGill Peterson and Kate Woodward
Richard and Carolyn T. Gwathmey Memorial Trust
Rivanna Trail Foundation
Robert and Dee Leggett Foundation
Sentara
Virginia National Bank

Bearfence Circle (\$5,000 - \$9,999)

Anonymous
Bama Works Fund
Donovan R. Benson*
Brett Brenner and Brian Reid
Charlottesville Area Mountain Bike Club
Anne and Stephen Colgate
Alison DeTuncq and Paul Archer
Jane and Phil Eberhardt
James Roderick Oughton Graves and Isabel Lopes Graves
Greene County Tourism
Alexandra Lampros and Hal Hallett
Jo Ann and Robert Hofheimer
Dr. Judith Richards Hope
Benjamin Hughes

Emily Larkin and Michael Kendrick
Norm Lauder Milch
Medway Charitable Trust
Kathy and Algis Penkiunas
Susan Pollart and Joe Chambers
Monique and Bill Pritchard
Drs. Kiyoko Asao-Ragosta and Michael Ragosta
S&P Global Foundation
The Anne & Gene Worrell Foundation
Douglas Ward and Earl Johnson
Cheri and Martin Woodard
Liz and Greg Yates

Limberlost Circle (\$2,500 - \$4,999)

Anonymous
Motoko Aizawa and Mark Sommers
Teal Baker
The Bob Hughes Team - Nest Realty Group
Booz Allen Hamilton
Carol and James Branscome
Wendy and Jack Brown
Fran and Tom Butterfoss
Dorothy Canter
Sharon Celsor-Hughes and Don Hughes
Cheri Woodard Realty
Thomas Crowell
Betsy Dalglish
Susan and David Dallas Jr.
Gilbert Dix
Dominion Foundation
Dun Foundation
Wendy Fewster
Joy and Ed Fuhr
Terry Grant
Great Outdoor Provision Co.
Kristin Heron and Brett Greenfield
Jeremy and Beth Hawks
Investment Research Partners
Scott Kelly

Nell Payne and Keith Kennedy
Catharine and Bruce Kuehne
Clare Lindsay and David Kennel
Diana and James Marilla
Massanutten Resort
Patrice and Scott Neese
The Norris Family Donor Advised Fund
Orvis Charlottesville
Public Lands Charlottesville
REI Co-op
Rachel and Josh Savey
Caroline and Bob Schellhas
William and Anne Seaman
Carolyn Smith
Martha Steppe
Karen Koltes and John Tschirky
W. R. Berkley Corporation
Kevin Werner
Williams Mullen Foundation

Blue Ridge Circle (\$1,000 - \$2,499)

Anonymous
3D EnviroLogics LLC
Adele Thomas Charitable Foundation
Erika and Tom Akre
Lisa Austin
Matthew and Patricia Babin
Delma and Jack Bagley
Pam and Bill Balcke
Jane and Charlie Barrell
Carl Bedell
Mary Frances leMat and Harold Beebout
Barbara and Matthew Black
Blue Ridge Cyclery
Ron Boehmer and Dalton Cox
Boeing
Anna and David Castle
Cedar Mountain Stone
Barbara Payne and James Childress
Jessica Coccione
Leslie and Andrew Cockburn
Community Foundation for a Greater Richmond
Ms. Andrea Currier
Cathy and Ed Dalrymple
Maynard K. Davis
Susan and John Dienelt
Lynn and Edward Dolnick
Margot and Donald H. Eason, Jr.
Janet Eden
Drs. Jeff and Juliana Elias
Chris and Gina Engel
Marian English
Florence Bryan Fowlkes

Gay Street Gallery
Lucille Glassman
Michelle and Craig Greene
Grelen Nursery
Victor Guernica
Sarah and Owen Guise
Jeffrey Hanley
Katrina and Walter Heeb
Edward Hickey
Dr. Christopher and Angela Holstege
Laura and Craig Hoover
Lynne and Joseph Horning
Elvira and Joe Hoskins
Susanne and Phillip Hubrig
Gary Hucka
Patricia Inman
Melissa and Chris Irmen
The Janet Stone Jones Foundation
Mary Jensen
Nicholas Kingsland and Nessa Feddis
Paula A. Craigo and John C. Lieske
Karen and Tad Loving
Kathleen and Robert Marmet
Martin Horn
MJ Moltenbrey
Mountain Laurel Foundation
Stacie Mruk and Timothy Fenton
Mark and Nancy Mueller
Katee and Chris Neal
Sally and William O'Neil
Oscar F. Smith, Marjorie Smith Charles, Angie Newman Johnson Fund
Andrew Painter and Mary Anne Calames
Raymond Paretzky and Karen Zacharia
PATH Foundation
Helen and David Penrod
Ranee and Mike Powell
Renee Purdy
Peggy and Perrin Quarles III
Alana Quarles
Taylor and Bill Randolph
RBC Wealth Management
Lisa Reid
Peggy and Peter Rice
Pat and Rick Richmond
Stephanie Ridder and John Beardsley
Rocky Top Climbing
Kris Monteith and William J. Schmidt
Eileen Scott
Mrs V.R. Shackelford III
Shenandoah Mountain Guides
Shenandoah National Park Association
Nancy Simpson-Banker and Steve Banker
Judy and Russell Smith
Todd Stansbury and Patricia Cary
Stewart R. Mott Foundation
Margaret Stromecki
Kirk Swanson
Scott Talbert
Target
The Merrill G. & Emita E. Hastings Foundation
The Stubblefield Foundation

Thrivent
Seth Turner
Mark Tyndall and Josh Ghaffari
Susan van den Toorn
Suzanne and David Weiss
Kimberly and Edwin Wikfors
Mary and Michael Wilson
Thomas and Kathy Zunino
Craig Zunka

Skyline Circle (\$500 - \$999)

Roberta Bair Watts
Rob Bannister and Ryan Valdez
Bocock/Hitz Fund
Boston Consulting Group
BRINK XR
Kathryn Onion and Ralph Burnham
Mr. and Mrs. Harry F. Byrd III
Charlottesville Plastic Surgery - Dr. Rhett Willis
Paula and Jeffrey Christie
Lorraine Pearsall and Paul Chrostowski
Common House
Kem and Roger Courtenay
Cox Farms Virginia, Inc.
Wyatt Crossin
Susan Deford and Ken Klein
Kathy and Paul Degutis
Virginia Downes
Rebecca Driskill Sahraoui
Edward Dumont and Newton Kendig
Benjamin Embury
Ronald and Elaine Faucher
Feast!
Barbara and Andrew Ferrari
Roger Fones
Victoria and Charles Fortuna
Harriet and Ben Giles
Brett Goodman
John Grunder
Jordan Hackworth
Drew Harris
Sharon and William H. Jahn III
Amy Johnson
Kathleen Minadeo Johnson and Eric Johnson
Journey Group, Inc.
Anne Holton and Tim Kaine
Kendra Scott
Wesley Kerr and Kim Welsh
Kristin and David Koehler
Jennifer and Andrew Leech
Denise Linkh
Emily Luebke
The Luminescence Foundation
William Maher Jr.
Kathleen and Donald Mann
Karen and David Mastervich
Merrie Mill Farm & Vineyard
Ray Mishler and Pat Smith
John Mitchell
Stephen Moloney
Anna Momper
Marsha and Henry Montague
Lang Murray
Terry and Stephen Nauss
Sean Nelson
Roberta and William Nixon

Carolyn Smith | Madison, VA

"From the first time I scrambled up Old Rag with my Girl Scout troop 60 years ago to the time I led a group of kids on Limberlost trail when the giant hemlocks were still standing, Shenandoah National Park has held a special place in my heart. Its natural beauty, abundance of wildlife and native plants, and the cultural history still alive today in place names and memories of descendants of resettled mountain dwellers, are some of what makes it special. The park is in my backyard; I look up and see its ridges every day, and I hope it continues to thrive, inspire, and thrill long after I am gone."



Northrop Grumman
Mary and Bernard O'Meara
Christina Luke and Taylor Odom
Manci and George Ohrstrom III
Paul and Marlene Otto
Plow & Hearth
George Ragsdale
Judie and David Reemsnyder
Charla and Thomas Reynolds
Roxanne Rhodes
Olga and Robert Ryan
Pamela Schnake
Karen and Andrew Sheehan
Amy and James Shirk
Simpson & Vail, Inc.
Sharon Snoderly
Amy and Eric Solomon
T & N Printing
Barbara and Christopher Wall
Adam Wesolowski and Amy Cheung
Barbara and David Willis
Jeanine and Tom Wolanski
Yates Properties LC
Nancy Zeis

Partners (\$100-\$499)

Anonymous
Mildred and Raymond Abell
Catherine Adams
Ms. Barbara Adolphi and Mr. E. Raymond Boc
Samantha and Ken Ahdoot
Sondra Albano
David Albee
Cary Ridder and David Alberswerth
Anthony Alimenti
Karoline and Roger Anders
Bobby Anderson
Michelle Fitzgerald and Mark Anderson
John Ankenev

Arcadia Publishing
Linda and Gary Ardison
Desha and Carlos Armengol
Mrs. and Mr. Mitzi Ashe
Augusta Bird Club
Stewart and Cecelia Babbott
Susan Crary Babcock
Elizabeth and Bernie Bach
Franklin and Retha Baer
Suzanne Baker
Robert and Joan Ballard
Suzanne and Tom Ballew
Yana Balram
Harvey Barker
Kelsey and Patrice Barklund
Jessica Barnes
Marguerite Barratt
Brian Barrett
Dorothy Batten
Andrew and Allison Battista
The Bavarian Chef
Elizabeth Beazell
Jim Bell
Belle Mead Bed & Breakfast
Natalie Belt
Michelle Benecke and Lila Helms
Helene Freiman and Gordon Berne
Kelly and Michael Berrang
Earle Betts
Emily Bishop
Ellie Black
Emily and Charles Black
Walter Blacklock
Mr. and Mrs. William Bolton
Karin Bonding
Andrew Bopp
Heather Borek
Heidi and Jay Boyd
Garland Bradfield
Natalie Bradley
Gretel Braidwood and Raymond D. Tindel
Joan and Bill Breidenbach
Isabel Brennan

Kathy & Algis Penkiunas | Rappahannock County, VA

"Shenandoah National Park has been integral to our family's cherished memories, from our annual post-Thanksgiving hikes up Old Rag to cooling off in the waterfalls of White Oak Canyon during the heat of summer. As our children grow into adulthood, we look forward to continuing these traditions with our future grandchildren and preserving the park's natural beauty for generations to come."



Chad and Natalie Briggs
James Brunger
Kelly Buck
Jane Cox and Eddie Bumbaugh
Bill Bunting
Deborah Burke and
Richard Ardery
Cynthia and Roger Burket
Beth and Kenny Burns
David Burton
Morgan Butler
Heather Byrnes
Marie and John Callahan
Christopher K. Calvert
John Calvin
Martha Cannon and
Robert Lander
Beth and Paul Cantrell
Mike and Dana Carlson
Liz Sumpter and Brian Carlton
Barbara Carpenter
Kathleen and Jim Carr
Claire Cassel and Derek Capizzi
Julie Cepulis
Marsha and Paul Chaffee
Cyndy Chapman
Deborah and Barry Chlebnikow
Katherine Christopher
Carol and Johnny Clark
Robert Clarke
Susan Coleman
Thomas Collier
Mark and Mimi Combs
Community Foundation Of
Northern Shenandoah Valley
Community Foundation of the
Central Blue Ridge
Jill Conrad
Paul Conrad
Jennifer Cooper
Marcia Cosmas-Monnett
Ryan Crabbe
Patricia Craver
Ann Crittenden and John Henry
Jeanette Crocker
David Crowe
Trish and David Crowe
Stacy and Robert Crowell
Steven Crowley
Crutchfield Corporation
Dan's Steak House
Nancy Dannels
Robin Dannels
Courtney Daragan
Shoshana Datlow
Dan Daugherty
John Davies and Margaret Moon
Candace and Richard Davis

Laurie Davis and Joseph Sellers
Jennifer Dean
Carol Campbell
Bruce Dell and
Deborah Lamberton
Shannon Demko
Paul Dennison and Sue Schaefer
Maxwell DiStefano
Lynda and Mario DiValentin
David Dlugosz
Dolores and John Dolan
Lydia Donaldson
Debbie and Jim Donehey
Emily and Whit Douglas
Ruth Douglas
Helene and Bill Downs
Susan and Alan Dranitzke
Diana Dryer Wright and
William Wright
Shannon and Mike Dubke
Annette Dusenbury
Michael Duvall
Ellen and Steve Early
Elizabeth Easterday
Martha and James Easton
Suzanne Eckl
Evelyn Egzi
Mr. and Mrs. Lawrence R. Eicher
Ms. Sue Eisenfeld and
Mr. Neil Heinekamp
Kathy Englar
Cheryl Enterline
Philip and Daniele Evans
John Fehrman-Prestipino
Kim Fellner
James Ficor
Maureen Finnerty
Bradley Fisher
Mr. Brian Fletcher
Paige Flink
Fly Fishers of Virginia
Pamela Flynn and Andrew Traynor
Bonadele Ellis and
James Greg Foster
Michael Fraser
Margaret and Kyle Fronapel
Shelia Fruman
Catherine Porter and
James Fuller III
Dianne Gagliano
Robert Gaines
Dolly Garrison
Marijke Gate and Jacob Bregman
Cordelia Gelly
Kathy and Bill Gentry
Anne Grenade and Garrick Giebel
Iva Gillet
Suzanne Gilman

Beryl E Gilmore
Jonathan Gilvarg
Karl Ginter
Glen Manor Vineyards
Elizabeth Glowa
Kathryn Goldfarb and
Dan Lanigan
Priscilla Goldsmith
Gwen and Howard Goodkin
Rosabel and Ronald Goodman
Ninon Gore
Mary Graham and Dennis Kelly
Mr. and Mrs. Trice Gravatte
Douglas Graves
Pamela Gray
Connie Jorgensen and
Ben Greenberg
Lindsay Gressard
Eugene Groshong Jr.
Emily and Jeffrey Guinn
Kurt Gunderson
Martha Guyon and Frederick Crum
Mary Scott and Charles Gyory
Ellen and Charles Haberlein
Mr. and Mrs. Eugene Hack
Annelise Hafer
Ms. Erin Hall
Susan Hall
James Hamilton
Wanda D. Hamlin
Allen Hammer
Cynthia Hammond
Shannon and Jacob Hampton
Ben Hansford
Alexandra Harris
Deb Harris and Drew Beard
Emily Harris
Kayla and Ben Hartline
Elisabeth Hartman
Scotti Harwood and Dan Dunlop
Lisa and Thomas Hayes
Regina Healy
Kevin and Anne Heanue
Vicky and Don Heishman
Ira Helenius
Donald J. Hellmann
Anne Hemenway
Charles Henderson
Thu Le and Michael Hendrick
Sigrid Hepp-Dax
Carolyn and Mark Herndon
Alison Herod
Domingo Herraiz
High Tor Gear Exchange
Bruce Hillner
Jennings Hobson
Lillian and William Hoehn
Christopher Hoelzl

Bryan and Jenn Hofmann
C. Michael Holloway
Cristina Horne
Sally and Dan Hurlbert
Robert Hurley and Heather Wicke
Keri Hutcheson
Maria Hyson
Gregory Jacobs
John and Tracie Jacquemin
Aaron and Amy Jeanguenat
James Jeffrey
Suzanne Jeffrey
Bart Johnson
Kaitlyn Johnson
Sarah and Jay Johnson
Kathleen Johnston
David Jolliffe
Benjamin Jones
Beverly Jones and Andy Alexander
Faith Ann Jones
Julie and Dave Jones
Susan and Bruce Jones
William and Marion Jones
Travis Jones
Joanne and Greg Jordan
Theresa Jordana
Jane and Barry Joyner
Ann Kamenjar-Ginty and
William Kamenjar
Brian and Lisa Karlisch
Judy Katzel
Robert Kavanaugh
James Kenimer and
Catherine Davis
Barbara and Jay Kessler
Ashby and Mark Kindler
Ann Kloeckner
David Klubes
Karen and Scott Knierim
Holly Korzilus
Dixie and Martin Kovacs
Dan Krasnegor and Kristen Jensen
Robert Krugman
Jane and Richard Lacasse
William R. Lamar and
Rebecca Harriett
Amy Lastinger
Bruce Laval
LD&B Insurance and
Financial Services
Dee and Robert Leggett
Andrea Leigh
Avra and Kevin Leigh
Thomas Lenar
Ginny Lepow
Sharon Lerner and John Golden
Mark Lewis
Lightwell Electric
Linda Ankrah Dove Donor Advised
Fund of the Community
Foundation of Harrisonburg
and Rockingham
Lawrence A. Linebrink
Rex and Lori Linville
Michelle Litteken
Emily and Justin Lock
Debbie and Andrew Lockman
Betty and Mike Long
Suzanne and Jim Long
Sara Loveland
Stephanie Lowenhaupt
David Maciolek

Susan MacKenzie
John and Ana Carolina Magruder
Eric Magrum
Kylee Malik
Elizabeth and James Mandell
Robert Marlay
Kathleen Marshall
Megan Martin
Jessica Mathews
Tom Mayer
Randy Mayes
Joann and Joseph Mazzetta
Brian McCarthy
Mr. and Mrs. John McCarthy
Anita McClellan
Holly and Dave McDaniel
Mary McDonald
Ray and Allison McGrath
Debbie and Bill McGuigan
Thomas McIntosh
Peter McIntyre
Nina McKee and Dan Avery
Kimberly McKinley Taylor
Linda McVoy
Kristin Melchior
Virginia and Tim Michel
Dana Milbank
Patrick Miles
Caroline Miller
J. Clifford Miller
Robert Miller
Susan Milligan
Lynda and Dan Monahan
Melissa and David Moody
Kevin and Tobey Morgan
Rob Morgan and Janice Erich
Julie Morrill
Melanie Morris
Ms. Alexia Morrison
Bill Morton
Janie Mosby
Bob Mosolgo and
Elizabeth Mosolgo-Clark
Patricia Mott and Dan Chadwick
Kerstin Mueller
Matthew Mueller
Pamela and Andrew Murray
Rose and Charles Myers
Delaney and Jason Nave
Patricia Neese
George Neighbors and
Bryan Honaker
Tracey Newton
Marguerite Noga
Nancy Nord and James Halpern
Northern Piedmont Community
Foundation
Tim Nowaczyk
Colleen O'Bryant
Melinda O'Neal and
Maureen Ragan
Charlotte Odom
Bernadine Olson
Ostendio, Inc.
Annette Owens
Susan and John Pai
Sheri Pais
Marla Palermo
Consi and Jud Palmer
Darshan Parikh
Kathryn and Troost Parker
Lisa and Joe Pastore

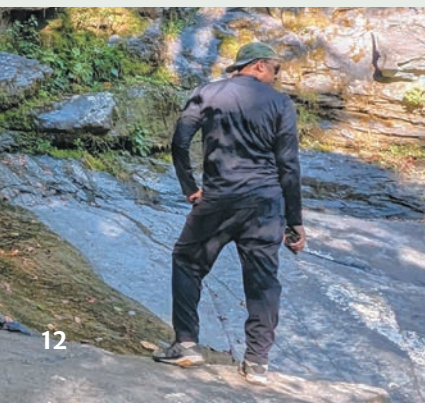
Anna Patchias and Patrick Keady
Seth Pates
Todd Patrick
France A. Payne
Pen Druid Brewing Co LLC
Jayme Pendergraft
Melanie Perl
Nicole Perry
Page and Scott Peyton
Piedmont Environmental Council
Brenda and John Plantz
Charles Poe and Kelly Callahan
Rose Polatty
Anna Porter
Prince Michel Vineyard & Winery
Jim and Vicki Printy
Robert and Noel Priseler
Michelle Prysby and John Woodell
Belinda and Wayne Pullen
Kevin Quinn
Ragged Mountain Running Shop
Mary Rainey
Marta Ramsey
Sudha Rangan
Chad Ratliff
Dr. Sandra Read
William Reid
Lynne and Craig Reigel
Theresa Reilly
Paul and Cheryl Reisler
Kathryn Renick
Mark Rey
Rhoback
Ann Ribstein
Mary Rice and Fred Williamson
Chris Rief
Margaret and Dan Riley
Rivers Bend Ranch
Alice and Jerry Robbins
Daniel Roberts
Nan Butler Roberts
Bonnie Robinson
AnnMarie Rockecharlie
Matthew Rohrer
Andrew Romano
Melinda Romano
Brenda and Bob Root
Kristi Rose
Deborah and Charles Ross
Shannon Rothschild
Gregg Rothschild
Craig Rumpel
Dr. David and Julia Ruskin
Alexis and James Rutt
S&P Global
Sage Bird Ciderworks
Amy Salerno
Timothy Sams
Mike Sasso
Peggy and Mike Scaboo
Hillary and John Schaeffler
Matt Schafer
Joey Schaljo
Susan Schieffer
Lois Schiffer
Sara Schillinger
Kim Schneider
Mike and Meredith Schulman
Warren Scovell
Ellen Dudley and Eric Seaborg
Arthur Shafer
Jay Shambaugh

Alexander Sharp
Sharp Rock Vineyard
Donna Shaunesey
Scott Shaw
Kevin Shedlick
Julie and Dan Shuren
Elizabeth Sidamon-Eristoff and
Hunter Lewis
Sierra Club Potomac Region
Outings
Peter and Jane-Ashley Skinner
Skyemar Foundation
Mr. and Mrs. Jeffrey and
Jane Smith
Steven Sowa
James Spencer and
Jennifer Conrad
John Spilman
Elizabeth Locke and John Staelin
John C. Staples, Jr.
Starr Hill Brewery
Ann and Peter Stenner
Jean Stephens
Donna Stern
Beverly Stickle
Sarah Stiles
Jack Stoner
John Stoner
Beverly Stout
Erica Stowe
Susan Strittmatter
Helen and Robert Stroh
Kathryn Kopchik and
Steven Styers
Kathy and Bill Sublette
Laura Sutherland
Elisabeth Swanbery
Ms. Christine Sweeters
Maggie Swensen
Jennifer and James Swisher
Stanley Switala
Elizabeth Szumel
Tac Taceosky
Nicholas J. Taylor
The Hartford
Steven Thorpe
Tikkun Olam Charitable Fund
John Titus
Carole and Jesse Todd
Donna and Tim Tolson
Charles H. Tompkins III
Karen Toth
Lin Tran and George Chang
Michael Travis
Philip Tremo
Margaret and Carter Tucker
James Turnage
Helen I'Anson and Jeffrey Turner
Denise and David Tushingham
Christina and Phillip Updike
Milda Vaivada
Kathy Van Ness and David Castro
Kittie Vanalstynne
Jacki and Roderick Vawter
Mary Jo Veverka
Vibrissa Beer
Mark Virgilio
Barbara and Ron Vogel
Anne Voigts
Ava Lena Waldman
Michael Ward



Patrick Miles | Elkton, VA
“There is an ambience of splendor in the park that draws one in, particularly when driving along Skyline Drive. My wife and I went on a hike at Rose River Falls just as winter was giving way to spring. The falls were in the process of thawing, and we saw the sun’s rays split through the ice falls like prisms, refracting the multi-colored shards of light in all directions. As I look toward the future, I am moved by the continued efforts of the Trust to ensure that Shenandoah National Park is preserved.”

Washington Four Seasons
Hiking Club
Bitsy and David Waters
Mollie and Stephen Watts
Kelli Weaver
Megan and Thomas Weaver
Megan Weaver
Rhea Webster
Katherine and Matthew Weeden
Joyce and Mike Wenger
Elizabeth White
Patience White and
Jonathan Silver
Susan White
Dr. Susan Wilcox
Elizabeth Williams
Steven Williams
Tycely Williams
Lee Willis
Alexander F. Wilson and
Joan E. Bailey Wilson
Jecinda Wilson
Mary Jane Wilson-Bilik
Ellis Wisner
Ms. Cynthia Witt
Kate and John Wofford
Ernest Wohnig
Thomas Woo
Peter Work
Cathie and Tom Woteki
Jackie Wozniak
Irene and Alan Wurtzel
Nick Yetter
Alan and Nancy Yost
Gary Younkin
Lynne and Carlton Yowell
Gena Zak
Daria Zane
Zen and Vitality with Zoa
John Zett



Sean Nelson | Louisa, VA
“The Trust plays a vital role in preserving the natural beauty and cultural heritage of Shenandoah National Park. Growing up in rural Louisa County and working my entire career in public service, I deeply value the Trust’s commitment to conservation, education, and engagement, as well as their efforts to ensure this incredible landscape remains accessible and pristine for future generations. Supporting the Trust allows me to contribute to the stewardship of one of Virginia’s most treasured resources, fostering both recreation and environmental preservation.”



Anne Colgate | Shipman, VA

"I hike at least once a week in SNP. One of my favorite times to hike is spring, when the wildflowers are abundant; the Trust is involved in helping control invasive species that may threaten the biodiversity of the flora. When I turned 62, I received my senior park pass and could enter SNP for free forever! I wanted a way to give back to SNP, and the Trust is a perfect way to do that so all of us can enjoy the beauty and uniqueness of SNP for years to come."

Friends (\$1-\$99)

Sarah A. Kurczewski
 Mary A. Lively
 David Abdallah and Jodi Frederiksen
 Mohammad Abuannadi
 Colin Achilles
 Kevin Achorn
 Brandon Adams
 Lydia and Marco Adelfio
 Pia and Drew Adler
 Kelley Ahern
 Peter Akey
 Kristin and Fred Allen
 Renee Allison
 Adam Anderson
 Cindy Anderson
 Sally Anderson and Richard Cooper
 Doerte Anikis
 Mary J. Anthony
 William Asher
 Nalini Ayya
 Janet and Ron Baellow
 Deborah and William Baker
 Anna Ballantyne
 Annette and Nick Ballow
 Mary Ellen and Walt Barnett
 Benjamin Barron
 Kimberly Bauman and Paul Goossens
 Toby Bell
 Jared Beller
 Anne Benjamin
 Heidi Gilman Bennett and Sean Bennett

Celeste Bennett
 Aaron Bernard
 Amy Cadge
 Glen Besa
 Katherine Beysseance
 Sarah Bingham
 Nicole Birtwistle
 Sandra Bishop
 Kelli Block
 Elizabeth Boucher
 Cathy Bovey
 Barbara and Jim Bowles
 Sherry Bowman
 Deborah Boyle
 John Braddock
 Owen Brenner
 Patricia Brewer
 Victoria Briscoe
 Rachel Brittin
 Julie and Ike Broaddus
 Bethany Brown
 Stephanie Brown
 Emma Budnik
 Margo and Daniel Bulka
 Kimberly Bullock
 Margaret Bunnell
 Joseph Butera
 Nancy Butters
 Laura Byrnes
 Frank Cain
 Corinna Caldwell
 Jared A. Cale
 David Callahan
 Daniel Carlin
 Jessie Carr
 Martha Carrington
 Sloan Carroll
 Mary Carson
 Janet Cash
 Susan Cash
 Anne Causey
 Linda Cavello
 Chris Ceglar
 Carol Chandross
 Michael Chernesky
 Jennifer Childress
 Claudia and Rick Childs
 Tanita Chriswell
 Danielle Clark
 Ravina Claussen
 Amy Clobes
 Chris Coen
 Kate and Robert Cohen
 Merry Beth and Harvey Cohen
 Tod Cohen
 Mark Collins
 Sadie Conner
 Alexandra Conroy
 Joseph and Amanda Cornett
 Dana Corriere
 John Bevan Crocker
 Carleen Cross
 William and Chris Crouch
 Will Crowder and Lorna Gerome
 Hadden Culp
 Karen Czar and Sharon Hicks
 Tracy and Keith Dahl
 Jonathan Daigle
 Bernie Daigle
 Danika Dallam
 Charles Davis

Gia Ann Deangelis
 Timothy Deatherage
 Raina DeFonza
 Kay DeKuiper
 Lara Deni and David Herrin
 Don Detmer
 Andrea Devine
 Dave DeVol
 Meredith Dibert
 Christie Disher
 Judy Dobbs
 Georgie Doll
 Lisa and Jay Drake
 Mary F. Driver
 Kathy and Tom Dunham
 Michael Dunn
 Michael and Kimberly Dulan
 Katherine Dutilh
 Diane and David Egge
 Dan Ehrman
 Miranda Elliott
 Courtney Ellis
 Karen and George Emmitt
 Diane English
 Mimi Ensminger
 Loren Erickson
 Krista Ernest
 Eric Evans
 Holly Law Eve
 Elizabeth Ewing and Skip Platt
 Linda and Bob Failes
 Dabney Ferguson
 Paul Filios
 Sarah and Maggy Foote
 Keith Forry
 Cody Fouts
 Barbara Franko
 Kelly Fredgren
 Dasha Frolova
 Ellen Frondorf
 Michael Gallagher
 Molly and Chris Gareis
 Jennifer and Mark Garman
 Frank and Jean Gearing
 Berhanu and Gwynn Gebeyehu
 Chris Geen
 Garry Gellert
 Joyce and Steven Gibson
 Laura and Marc Gilgannon
 Izabelly Gleed
 Teri and Greg Glennon
 Kara Gloeckner
 Nancy Golm
 Jesús Gómez
 Dillon Good
 Sadie and Valerie
 Olin Gordon and Chelsea Sullivan
 David Gorsline
 Charles Graf
 Natalie Graver
 Richard Greene
 Ryan Greenwood
 Grey Pine Lodge
 Sue and Joe Grigas
 Aaron Grills
 Kai Groner
 John Gunnoe
 Richard Gusovius
 Tara Hackenberg
 Emilee Hackney
 John Hadley

Nan Halperin
 Sara Hamilton
 Kim Soltis Hammer
 Joyce Harman
 Elizabeth and Albert Harris
 Karen Ford and Richard Harris
 Frankie Harris-Lyne
 Charlotte Harrison
 Stephanie Harry
 Candace and Tom Hart
 Kelly and Charles Hart
 Rachel and Nathan Hart
 Donald Hashagen
 Lynn and Charles Hatch
 Dr. Fern Hauck
 Claire Hearle
 Linda Braxdale Heesch
 Ember and David Heishman
 Chris Henderson
 Eden Henderson
 Eric Henkel
 Tana Herndon
 Peter and Deborah Heymann
 Catherine Higgins
 Charles Hillon
 Ms. Jeanne Hine
 Ms. Holly Hintz and Mr. Tom Banton
 John Hipsher
 David Hirschman
 Sheila Hoben
 Daniel and Sara Hoffman
 Tracy Hojohn
 Sarah and Maggy Horner
 Bonnie and Howard Horowitz
 Tammi Houton
 Susan Hovan
 Susan and Patrick Howington
 Anne and Christopher Hoy
 Bronwyn Hubbard
 William Huffman
 Nancy Hwa
 Melinda Hylton
 Andrew Inglis
 Nina and Hank Isaac
 Linda Jahn
 Daniel and Jenny James
 Stephen and Amy Jenness
 Jeff Jennings
 Diana Jensen
 Jennifer Jessup
 Darcy Johnson
 Roy Johnson
 Ebony Jones
 Gregory Jordan
 Sean Karr
 Richard Kavanaugh
 Stuart Kay
 Patricia Kearns
 Karen and Kevin Kelly
 Daniel Kenan
 Dyanne Singler and Patrick Kenney
 Sandy Kessler Kaminiski
 Becka Kindler
 Amy and Brian King
 Michael Kinnick
 Sean Kirgan
 Jordan Klimek
 Paul Koch
 Brian Korte

Murali Krishnan
 Jaime Kurtz
 Alice and Richard Laimbeer
 Christina LaRoche
 Laura LaVelle
 Terry Lavin
 Lynn Lawrence
 Lynelle Lawrence
 Phillip Lawton
 Tri Le
 John Eric Leasure
 Karen Leblanc
 Andrew Lee
 Debbie Lehman
 Karen Lewis
 Sarah Liddle
 Roger Lilly
 Wayne Limberg
 Taygra Longstaff
 Christina and Don Look
 Susann Lusnia
 Betsy MacCarthy
 Elizabeth Macy
 Alex Mahone
 Gina Mahoney
 Vivek Mantha
 Brian and Holly Markwalter
 Jeanette Martin
 Kelly Martin
 Nancy Mason
 Natalie and Rob Masri
 Barbara and Bradley Massam
 Virginia Masterson
 Tim Mastracci
 Lisa Matson
 Rose Matthews
 Ashley Matthews
 Paige Mattson
 Greg Mavraganis
 Mary Mayo
 Robert Mayo
 Michelle McCarthy
 Roger McClelland
 John McCormick
 Patty McCormick
 Barbara McGehee
 Judith McGuire and Arthur Tsien
 Linda McKnight
 Amy McLeskey
 James McVay
 Philomena and Henry Melamed
 Debbi Meslar-Little
 Dina Michel
 Emily Miles
 Andrea and Dan Miller
 Beverly and Howard Miller
 Carrie Miller
 Mark Miller
 Angie Miner
 Emma Mitchell
 Bonita Moore
 Megan Moore
 Paola and Alan Moore
 Jeffrey Moore
 Anna and Sara Morency
 Robert Morris
 Mia Morrison
 Helen Ida Moyer
 Eileen and William Moynan
 Kathryn Mullen
 Thomas Murphy

Chelsea Murray
 Joanne Murray
 Marylou Murry
 Narmada Winery
 Lori Nathanson
 Kara Nelson
 Paul and Virginia Newton
 Beverly Nichols
 Penny Norford
 Chris O'Donnell
 Kathleen and Tim Padalino
 Jaruchan Palakawongs
 Matthew Panzer
 Maria Parry
 Marshall Paul
 Michael Paul
 Nancy and David Paulson
 Greta Peisch
 Michael Pettinichi
 Kary Phillips
 Kelly Pickerel
 Piper Sander Companies
 Oxana Podshivalova
 Betty and George Poehlman
 Girish Pokhrel
 Malcolm Ponte
 Joy and Stephen Poppe
 Jennie Porter and Gary Rosecrans
 Betsey Poulos
 Jessica Powell
 Laurelyn Pratt
 Abe Prescher
 Drew Price
 Ernest and Terri Pugh
 Gianni Puglielli
 Blake Puhak
 Gilbert Queitzsch
 Anna Quirk
 Elise Rabatin
 Elizabeth and Michael Rabin
 Nick Rader
 Jay Ragon
 Frank Rambo
 Beth Rawlings
 William and Laurie Reaves
 Beth Reese
 Colleen Reeves
 Marie Reinard
 Morgan Reitz
 Will Retzer
 Ingrid Reynolds
 Perlyn Richards
 Boyer Richardson
 Christina Riebeling
 Robert Riedel
 Patricia Riedinger
 Exa Rief
 Meghan Rief
 Malinda Riffer
 Paul Riner
 Jeannine Robertazzi
 Corissa Robey
 Kathleen Robinson
 Erika Roeder
 Joseph Roscioli
 Perry and Wendy Rosensweig
 Carolyn Ross
 Ellen and Stuart Ross
 John Ross
 Matthew Rossello
 Diane and Brian Rozycki

Dianne Rubright
 Christine Fleckles and Edwin Rushia
 Anne Ruskowski
 Khymi Russell
 Karen Russo
 Kathy Sadler
 JoAnn and Arturo Santos
 Erika Satlof
 Sherrie Sawyer
 Joey Schaljo
 Kathryn Schick
 Karen Schilling
 Kim Schneider
 Frederick Schneider
 Dama Schneider
 David and Sabine Scholes
 William Scholten
 Briana Schulze
 George Scott
 Keith and Teresa Shaner
 Curtis and Julian Shaver
 Elizabeth and Napier Shelton
 Dave Shiff
 Daniel Shiflett
 Mark Shotton
 Tara Silfies
 Shauna Simon
 Emily Sipes
 Maria Sisk
 Angela Skeeles-Worley
 Donna and Patrick
 Jennifer Smallwood
 Charles Smith
 Kim and AJ Smith
 Robert and Joan Smith
 Eliza Snipes
 Julia Snipes
 Grace Snyder
 Allen Speight
 Edward Spellman
 Michael Spencer
 Robert Stackhouse
 Nancy Stankiewicz
 Sebastian Steadman and Luke Shanle
 Brenda and Paul Stephens
 Christine and Thomas Stephens
 Barb Stewart and Kenneth Johnson
 Herbert Stewart
 Kathleen Stewart
 Don Stock
 Allison Stokes
 Ines Sun
 Linda Sylvester
 Jule and Joan Szabo
 Suzanne Tanner-Chitwood
 Thomas Tash
 Anne Taylor
 Heather Taylor
 Linda Taylor
 J. Taylor
 Ben Teicher
 Patricia Temples
 The Kroger Company
 Roby and Whitney Thompson
 Thompson Restaurants
 Sue Tiezzi
 Rosemarie Trapnell
 Jessica Travers

Kelley Tripp
 Caitlin Troyer
 Lauren Truslow
 Lynda Tubridy
 Stephen Turan
 Noreen Turyn
 Jean Vallianos
 Christina and Dirk Van Assendelft
 Mariella and William Van Pelt
 Steve Vanwormer
 Esther Vaughan
 Davide Vieira-Leal
 Amanda Vinas
 Schuyler Vinzant
 Julie Vostinak
 Erik Wachtmeister
 Krista Waibel
 Christine Waldrip
 Shirley Walker
 Matthew and Gay Wallace
 Sara and Bill Walton
 Kerry Walz
 Dan Warthen
 Mr. Kenneth Webster and Ms. Joyce Kaswandik
 Aron Weisgerber
 Bradley White
 David I. White
 Leanna Whitmore
 Logan Wilde
 Mary E. Wiley and Leslie D. McFaden
 Christina and Thomas Wilkinson
 David Williams
 Ms. Julia Williams
 Susanna Williams
 Mark Willis
 Barbara Wilson
 Penelope Winder
 Vontia Witherspoon
 LaCosta Wix
 Paula Wolferseder Yabar
 Jason Woodfin
 Leah Woody and Becky Reid
 Carrie Worrell
 David Wunderlich
 Sharon Wuori
 Lynn Young
 Dylan Young
 Anna Young
 Paula Youra
 Jamie Yowell
 Sarah Zeller
 Mr. Matt Zimmerman
 Kathryn Brooke Zoller

Adventurer Club

Adventurer Club members are those who purchase tickets to the Banff Centre Mountain Film Festival with an additional donation to the Shenandoah National Park Trust.

Stewart and Cecelia Babbott
 Elizabeth and Bernie Bach
 Harvey Barker
 Kelsey and Patrice Barklund
 Dorothy Batten
 Andrew and Allison Battista
 Carl Bedell
 Natalie Belt

Helene Freiman and Gordon Berne
 Karin Bonding
 Kelly Buck
 John Calvin
 Mike and Dana Carlson
 Cyndy Chapman
 Barbara Payne and James Childress
 Thomas Collier
 Mark and Mimi Combs
 Patricia Crowe
 David Crowe
 Stacy and Robert Crowell
 Shoshana Datlow
 Helene and Bill Downs
 Annette Dusenbury
 Michael Duvall
 Chris and Gina Engel
 Wendy Fewster
 Margaret and Kyle Fronapel
 Gwen and Howard Goodkin
 Kurt Gunderson
 Ms. Erin Hall
 Cynthia Hammond
 Drew Harris
 Anne Hemenway
 Charles Henderson
 Alison Herod
 Bruce Hillner
 Bryan and Jenn Hofmann
 Darcy Johnson
 Joanne and Greg Jordan
 Barbara and Jay Kessler
 Ashby and Mark Kindler
 Dan Krasnegor and Kristen Jensen
 Amy Lastinger
 Thomas Lenar
 Ginny Lepow
 Sarah Liddle
 Rex and Lori Linville
 Megan Martin
 Brian McCarthy
 Holly and Dave McDaniel
 Patti McGill Peterson and Kate Woodward
 Thomas McIntosh
 Kimberly McKinley Taylor
 Robert Miller
 Bob Mosolgo and Elizabeth Mosolgo-Clark
 Kerstin Mueller
 Pamela and Andrew Murray
 Terry and Stephen Nauss
 Delaney and Jason Nave
 Tim Nowaczyk
 Marla Palermo
 Todd Patrick
 Marta Ramsey
 Lynne and Craig Reigel
 Peggy and Peter Rice
 Pat and Rick Richmond
 Craig Rumpel
 Joey Schaljo
 Sara Schillinger
 Kim Schneider
 Mike and Meredith Schulman
 Donna Shaunesey
 Elizabeth Sidamon-Eristoff and Hunter Lewis
 Nancy Simpson-Banker and Steve Banker

Peter and Jane-Ashley Skinner
 John Spilman
 John Stoner
 Erica Stowe
 Ava Lena Waldman
 Dr. Susan Wilcox
 Elizabeth Williams
 Barbara Wilson

Club 105

Club 105 members make a recurring, monthly unrestricted gift to the Shenandoah National Park Trust.

Rob Bannister and Ryan Valdez
 Carl Bedell
 Katherine Beyselance
 Sarah Bingham
 Ron Boehmer and Dalton Cox
 Beth and Kenny Burns
 Beth and Paul Cantrell
 Sharon Celsor-Hughes and Don Hughes
 Katherine Christopher
 Jessica Cocciolone
 Steven Crowley
 Gilbert Dix
 David Dlugosz
 Rebecca Driskill Sahraoui
 Elizabeth Easterday
 Philip and Daniele Evans
 James Ficor
 Pamela Flynn and Andrew Traynor
 Ellen Frondorf
 Shelia Fruman
 Ben Hansford
 Joyce Harman
 Edward Hickey
 Aaron and Amy Jeanguenat
 Ann Kamenjar-Ginty and William Kamenjar
 Emily Larkin and Michael Kendrick
 Dee and Robert Leggett
 Mark Lewis
 Suzanne and Jim Long
 Karen and Tad Loving
 Karen and David Mastervich
 Dina Michel
 MJ Moltenbrey
 Julie Morrill
 Patricia Neese
 George Neighbors and Bryan Honaker
 Chris O'Donnell
 Christina Luke and Taylor Odom
 Lisa Reid
 Roxanne Rhodes
 Daniel Roberts
 Bonnie Robinson
 Timothy Sams
 Arthur Shafer
 Maria Sisk
 Grace Snyder
 Margaret Stromecki
 Laura Sutherland
 Elisabeth Swanbery
 Thomas Tash
 Carole and Jesse Todd
 Donna and Tim Tolson
 Michael Travis
 James Turnage

Denise and David Tushingham
 Megan Weaver
 Kimberly and Edwin Wikfors
 Thomas Woo

Honorary Gifts

Names in bold indicate those for whom an honorary gift has been made.

Teal Baker
 Richard Greene
 Perlyn Richards
 Vontia Witherspoon
Paul Cantrell
 Celeste Bennett
Center Hike Leaders
 Anne and Stephen Colgate
Steve and Anne Colgate
 Robert Kavanaugh
Heather and Kemp Edwards
 AnnMarie Rockecharlie
Gretchen Evans
 Heather Byrnes
Ken Eyre
 Joseph Roscioli
Joan Gilrain
 Charles and Lynn Hatch
Fletcher Gore
 Ninon Gore
Robert Neil Hazlett
 Heather Taylor
Merrick Hoben
 Sheila Hoben
Princeton Jeffrey
 Suzanne Jeffrey
Megan Karr
 Sean Karr
Mari Kelly
 Tom Mayer
Jenny Leech
 Susan and John Dienelt
Robert Michel
 Virginia and Tim Michel
U.S. Park Rangers Melissa Moses and Mindy Bolay
 Steven Thorpe
Jocelyn Prostko
 Tom Mayer
Brenda Rawlings
 Beth Rawlings
Michael Reilly
 Theresa Reilly
Kimberly Richardson
 Boyer Richardson
Quinn Rief
 Cindy Anderson
 Sherry Bowman
 Shannon Demko
 Christie Disher
 Annelise Hafer
 Sara Hamilton
 James Hamilton
 Catherine Higgins
 Tammi Houton
 Benjamin Jones
 Sean Kirgan
 Andrew Lee
 Elizabeth Macy
 Gina Mahoney
 Betsey Poulos

Beth Reese
 Colleen Reeves
 Marie Reinard
 Meghan Rief
 Chris Rief
 Exa Rief
 John Ross
 Anne Ruskowski
 Susan Schieffer
 Ben Teicher
 Jessica Travers
 Penelope Winder
 LaCosta Wix
Laurie Rokutani
 Lindsay Gressard
Jack and Nan Rouse
 Malinda Riffer
Mark Salerno
 Amy Salerno
Nan Schramm
 Susan MacKenzie
Shack Shackelford
 Oscar F. Smith, Marjorie Smith
 Charles, Angie Newman
 Johnson Fund
Jane Sigmon
 Kathy Van Ness
The SNPT Staff
 Jess Barnes
Thomas Turan
 Stephen Turan
Bram Walzl
 Kerry Walzl
Megan Weaver
 Thomas Weaver
Steve Wilcox
 Cristina Horne
Bryan and Kathryn Wisner
 Ellis Wisner
Greg Yates
 John "Butch" Davies

Memorial Gifts

Names in bold indicate those for whom a memorial gift has been made.

Kevin H. Adams
 Robert and Joan Ballard
 Brian Barrett
 Jay Ward Brown
 Timothy Deatherage
 Kay DeKuiper
 Alan and Susan Dranitzke
 Edward Dumont
 Ann Kloeckner
 Northern Piedmont
 Community Foundation
 Matt Schafer
 Douglas Ward and Earl Johson
Walker Hunt Bateman V
 Paige Flink
Donald C. Baur
 Sheri Pais
Todd Boehnlein
 Kathy Sadler
Robert B. Brinsmade
 Charlotte Odom
Julia Emma and Guillermo Bueno
 Jeff and Juliana Elias

Joseph Callenes-Sloan
 Jill Conrad
 Donna and Patrick Sloan
Ruth Warren Canaday
 Linda McVoy
James & Mary Canan
 Robert Krugman
Mathew John Conlon
 Courtney Daragan
Scott Cooper
 Danika Dallam
Dewey Curry
 Rhea Webster
Alexander "Sandy" Paul Curtis
 Bart Johnson
 Ellen and Stuart Ross
Gil Dannels
 Nancy Dannels
James M. Dean
 Jennifer Dean
Ray C. Drumheller
 Marcia Cosmas-Monnett
Tom Englar
 Kathy Englar
Michael Philip Evans
 Renee Allison
 Heidi and Jay Boyd
 Margaret Bunnell
 Mary F Driver
 Philip and Daniele Evans
 Laura LaVelle
 Angie Miner
 Kathryn Mullen
 Karen Schilling
 Arthur Shafer
 Anne Voigts
Anita Fellner
 Kim Fellner
Brandy Fewster
 Wendy Fewster
DeHaven Fleming
 Christine Waldrip
Barbara and Joe Fumagalli
 Robert Riedel
Eugene M. German
 Betsy MacCarthy
Jackson Robert Greene
 Michelle and Craig Greene
Michelle Kellerman
 Mark Collins
Kenneth Lee Knight, Jr.
 David Klubes
 Kittie Vanalstyne
Ron Knipling
 Tracy and Keith Dahl
Robert and Virginia Laval
 Bruce Laval
James C. Miller
 Christine Sweeters
Kathy Mumma
 Susan Coleman
John B. Myers III
 Bill Morton
 Jim and Vicki Printy
 Mary Rainey
Tom Noga
 Marguerite Noga
Eli Gager Norris
 Alex Mahone

Shirley Perram
 Sharon Lerner
 Shannon Rothschild
Laurie Pilkerton
 Marian English
Gary Potter
 Judy Katzel
David and Emily Purdy
 Renee Purdy
Jane Anita Lasley Quinn
 Walter Blacklock
 Beth and Kenny Burns
 Cheryl Enterline
 Lynn Lawrence
 Susann Lusnia
 Mary McDonald
 Robert and Noel Priseler
William Renick
 Kathryn Renick
Dr. Mark K. Robbins
 Alice and Jerry Robbins
Herman S. Rubright Jr.
 Dianne Rubright
 John C. Staples, Jr.
James Russo
 Karen Russo
Tim Santoro
 Tracy Hojohn
Robert Shaw
 Scott Shaw
Kathy Sitarski
 John Fehrman-Prestipino
Walt and Joyce Smith
 Teri Robinson
Kim Whitley
 Mitzi and Michael Ashe
 Elisabeth Hartman
 Lisa Matson
 Roger McClelland
 Sherrie Sawyer
 Mark Shotton
 Linda Sylvester
 Julie Vostinak
 Daria Zane
Mike Wyatt
 Paige Flink
Denny Yetter
 Nick Yetter
Jene Younkin
 Gary Younkin

Matching Gift Organizations

Booz Allen Hamilton
 Boston Consulting Group
 Dominion Foundation
 Merck Foundation
 Northrop Grumman
 Ostendio, Inc.
 Piper Sander Companies
 S&P Global
 The Hartford
 Thrivent
 Williams Mullen Foundation

In-Kind Contributions

Teal Baker
 The Bavarian Chef
 Blue Ridge Cyclery
 Cheri Woodard Realty
 Common House
 Crutchfield Corporation
 Dan's Steak House
 Wendy Fewster
 Glen Manor Vineyards
 Great Outdoor Provision Co.
 Luray Caverns
 Massanutten Resort
 Patrick Miles
 Orvis Charlottesville
 Melanie Perl
 Plow & Hearth
 Prince Michel Vineyard & Winery
 Public Lands Charlottesville
 REI Co-op
 Rhoback
 Rivers Bend Ranch
 Sharp Rock Vineyard
 Shenandoah Mountain Guides
 Thompson Restaurants
 Yates Properties LC

Corporate Volunteer Groups

KPMG
 Merck
 S&P Global

Volunteers

Appalachian Mountain Club
 Teal Baker
 Ron Boehmer and Dalton Cox
 Carol Caesar
 Mike Clarke
 Amy Clobes
 Anne Colgate
 Steven and Savannah Davis
 Bruce Dell and Deborah Lambertson
 Diane and Bill Dennis
 Meredith Dibert
 Wendy Fewster
 Cody Fouts
 Alexandra Lampros and Hal Hallett
 Emily Harris
 Cate Hebert
 Katrina and Walter Heeb
 Ms. Holly Hintz and Mr. Tom Banton
 Bill Howe
 Fritz Hudson
 Evie Huston
 Shelly Jackson
 Kathleen Minadeo Johnson and Eric Johnson
 Omar Lima
 Mary Mayo
 Patrick Miles
 Ray Mishler and Pat Smith
 MJ Moltenbrey
 Kerstin Mueller
 Abbey Murray
 Chelsea Murray



Orvis | Jake Billmyer

"Shenandoah is such a special place. Through countless days of losing touch with reality while fishing for Native Brook Trout, I found inspiration to help preserve this natural resource for future generations. Community partnerships are built on the sharing of a common interest and the one that Orvis Charlottesville and SNPT have formed has inspired many people to engage with this beautiful land. Our ongoing partnership with continue to give back in ways that provide opportunity to the community to protect these beautiful mountains for years to come."

Patrice and Scott Neese
 Patricia Neese
 Jennifer Peart
 Bob Pingry
 Karl Rand and Margo Roseum
 Barbara and John Reynolds
 Chris Rief
 Quinn Rief
 Asher Ryan
 Timothy Sams
 Donna Shaunesey
 Dan Shuren
 Carole and Jesse Todd
 Milda Vaivada
 Adam van Doren
 Suzanne and David Weiss
 Richard Wigg

Access to the Outdoors Fund Partners

ART 180
 Big Brothers Big Sisters
 Black People Who Hike
 Boys & Girls Club
 Defensores de la Cuenca
 Elk Hill
 Latino Outdoors
 Love: No Ego
 SoulTrak Outdoors



Events Calendar

- October 25–26, 2024: Rapidan Society Weekend in the Park
- November 11, 2024: Fee-free Park Entry
- December 3, 2024: Giving Tuesday
- January 15, 2025: Fee-free Park Entry
- March 7–9, 2025: Banff Centre Mountain Film Festival
- May 3, 2025: Show Your Love for Shenandoah Volunteer Day
- June 1, 2025: Shenandoah Soirée
- September 26–27, 2025: Art in the Park

THANK YOU

to those who have a bear on your bumper – you’ve contributed \$285,885 in license plate sales this year!

Want to make an impact while cruising Skyline Drive in style? Learn more about ordering a plate for your car or motorcycle at www.snptrust.org/licenseplates



Shenandoah National Park Trust
P.O. Box 341 | Charlottesville, VA 22902
(434) 293-2728 | info@snptrust.org
www.snptrust.org

OFFICIAL PARTNER OF THE NATIONAL PARK SERVICE

SNPT Staff

- | | |
|--------------------|------------------|
| Jessica Cocciolone | Elizabeth Mizell |
| Emily Chiles | Anna Patchias |
| Ember Heishman | Ethan Serr |
| Jillian Lum | Julie Shuren |